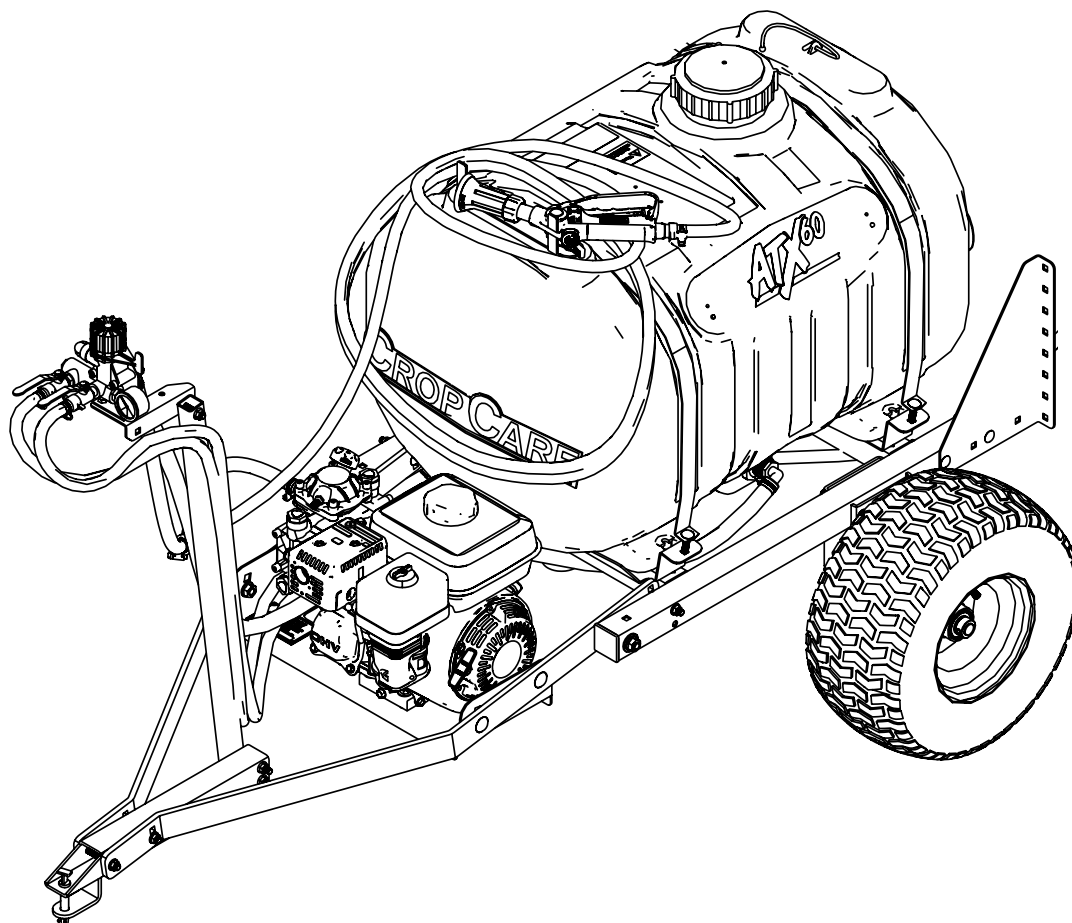




Assembly Manual

60 Gallon Trailer Sprayer, with Gas
Engine and Diaphragm Pump
Model: ATX60-TR-G



Manufactured by PBZ LLC
A Paul B Zimmerman Inc. Company
www.CropCareEquipment.com

Form: ATX60-TR-GAM
Rev: B Date: 10/23

Assembly Instructions

The ATX60-TR-G comes partially assembled and requires some assembly. Use the assembly instructions to ensure proper assembly. Before assembling, ensure that the boxes contain the necessary components and parts.

Installation Time:

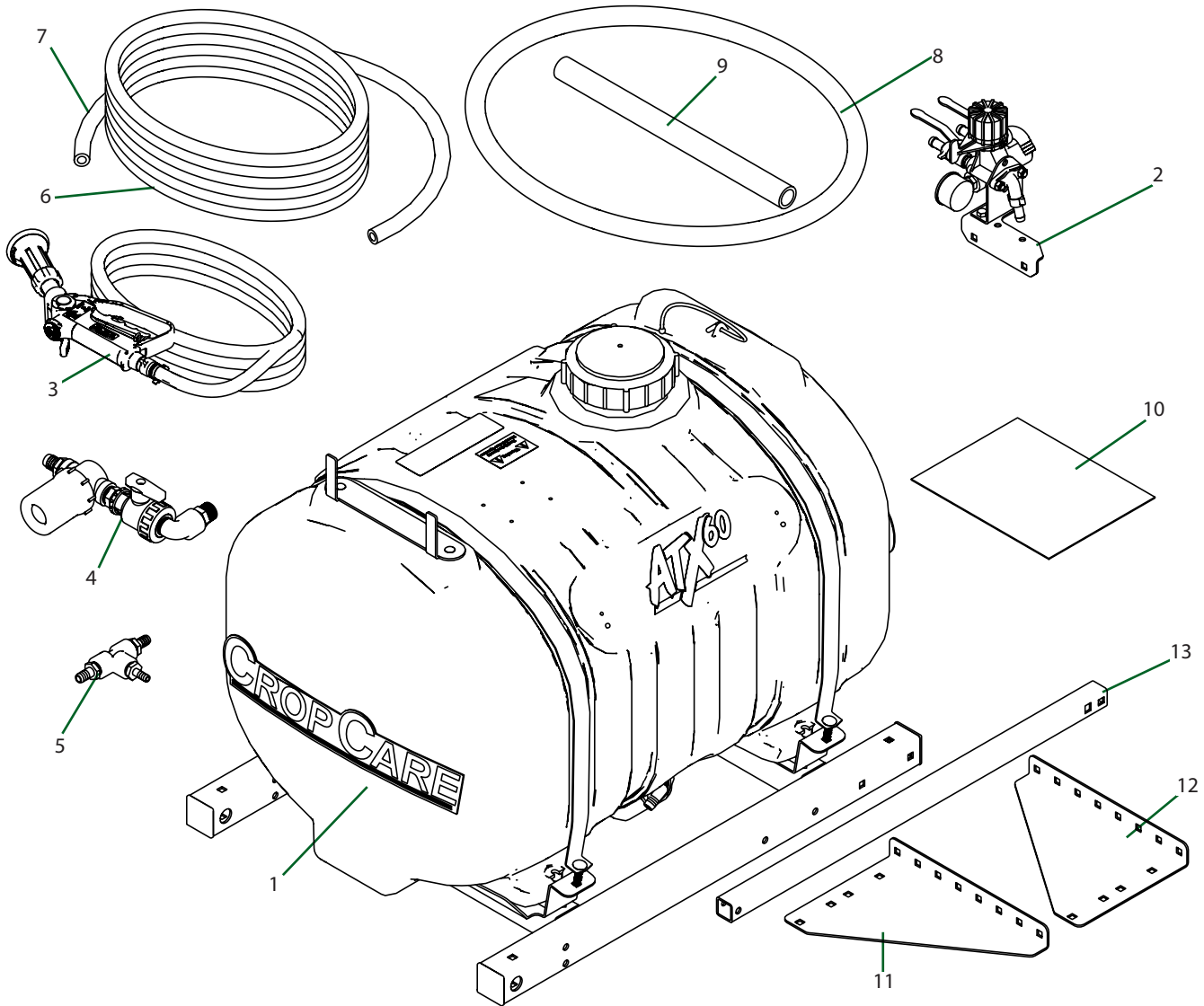
- Approximately 3-4 hours

Recommended Tools

- 7/16" socket or wrench
- 1/2" socket or wrench
- 9/16" socket or wrench
- 3/4" socket or wrench
- 5/32" Allen Wrench
- Adjustable wrench or pliers
- Hose cutter or knife to cut hoses to length
- Battery or air powered impact
- Pipe Tape and Thread Sealant

Assembly Instructions

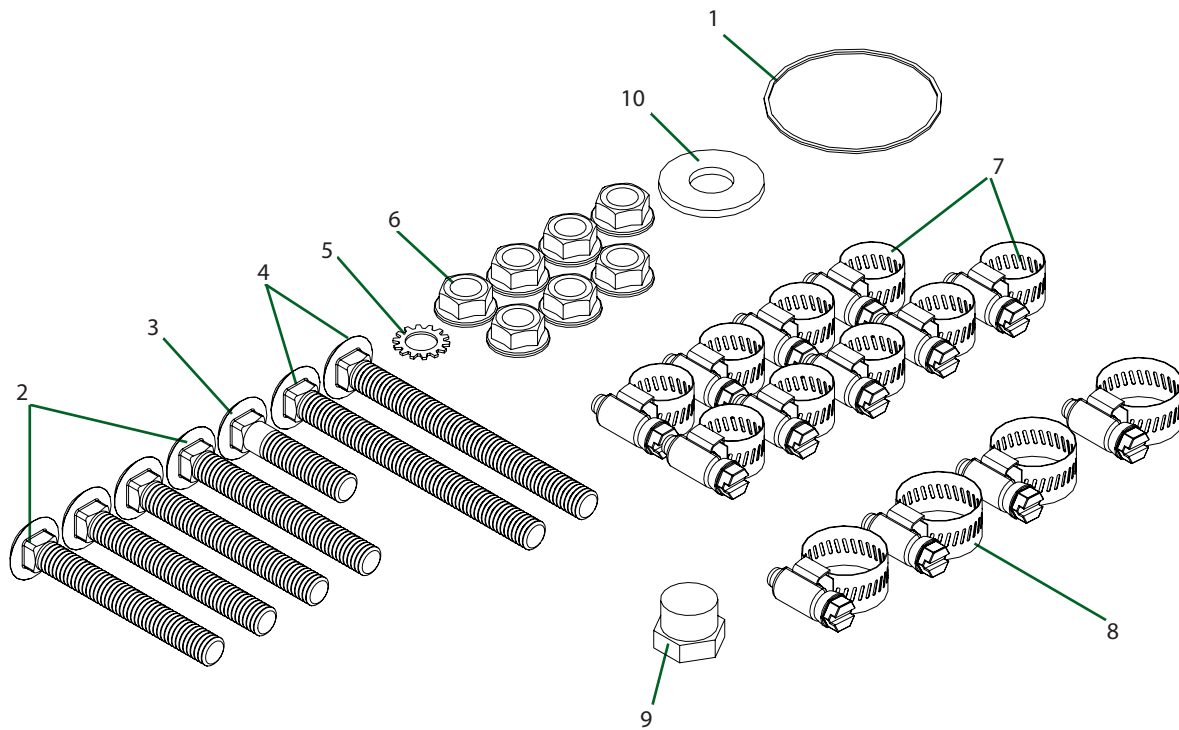
Box Contents (Tank, Base Frame, and Controls)



Item	Qty.	Part Number	Description
1	1	-----	Assembled Tank and Base
2	1	-----	Assembled Controls
3	1	-----	Assembled Spray Gun
4	1	-----	Assembled Valve and Filter
5	1	-----	Assembled Tee
6	22 FT	1008	Hose, EPDM Rubber 1/2"
7	3.5 FT	1008	Hose, EPDM Rubber 1/2"
8	6.25 FT	1010	Hose, EPDM Rubber 5/8"
9	1.5 FT	3003	Hose, Suction 3/4" Clear PVC 100 PSI
10	1	ATX60-TR-GOM	Owner's Manual, ATX60-TR-G
11	1	T702	Boom mounting angle, right
12	1	T703	Boom mounting angle, left
13	1	T714	Control mounting post

Assembly Instructions

Hardware Bag (Tank, Base Frame, and Controls)

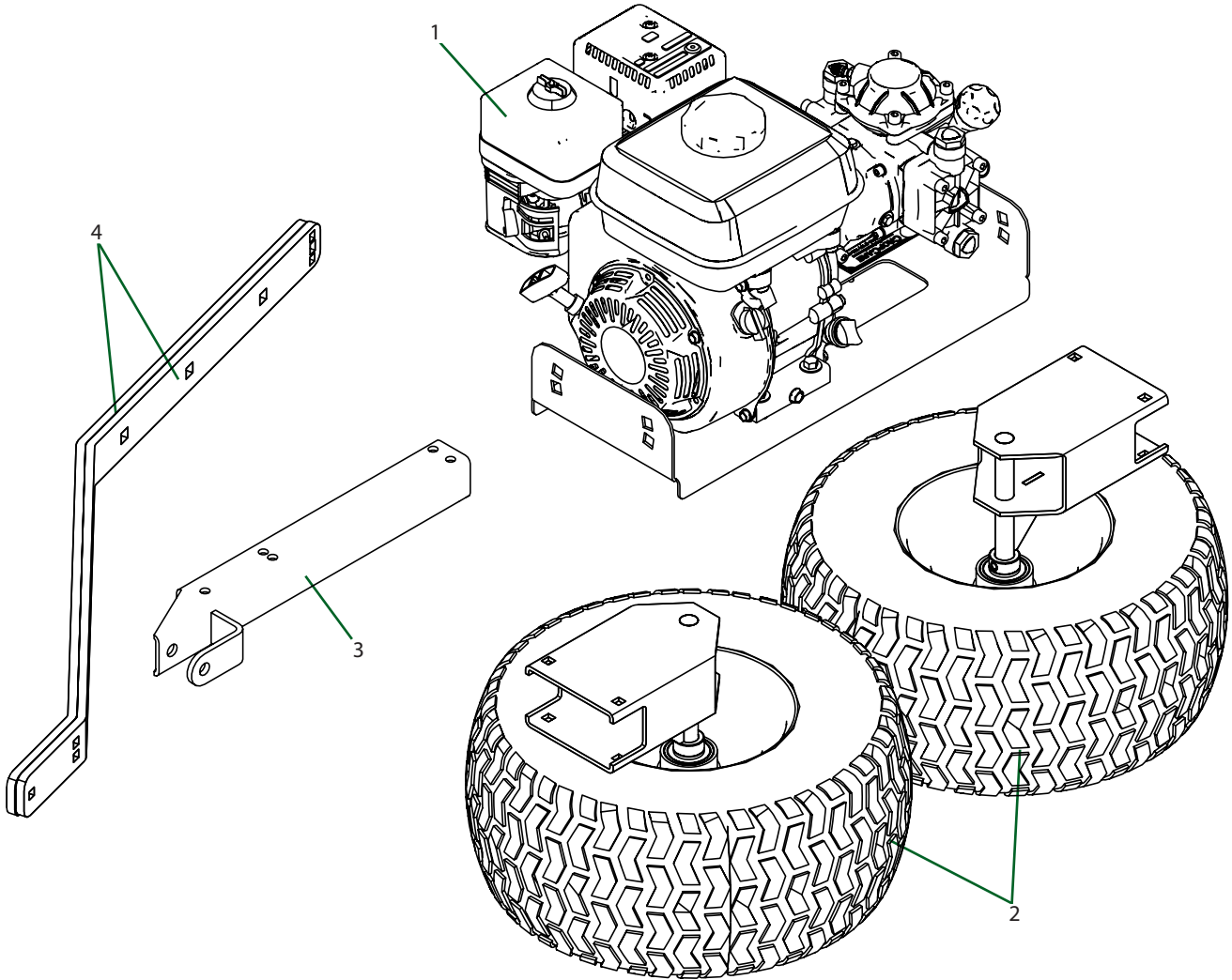


Item	Qty.	Part Number	Description
1	1	17000091 *	Gasket, Strainer 3350 1/2" & 3/4" EPDM
2	4	CB38*3G5	Bolt, Carriage 3/8-16 x 3" Gr 5
3	1	CB38*2G5	Bolt, Carriage 3/8-16 x 1-3/4" Gr 5
4	2	CB38*4G5	Bolt, Carriage 3/8-16 x 4" Gr 5
5	1	EW12	Washer, Lock External-Tooth 1/2"
6	7	FN38	Nut, Flange 3/8-16
7	9	6806052	Hose Clamp, 1/2" - 29/32" SS
8	4	6810052	Hose Clamp, 1/2" - 1-1/16" SS
9	1	2841240	Plug, 3/8" G plastic
10	1	FW12	Washer, Flat 1/2" USS

* NOTE: Item 1 is a spare gasket for the suction line filter.

Assembly Instructions

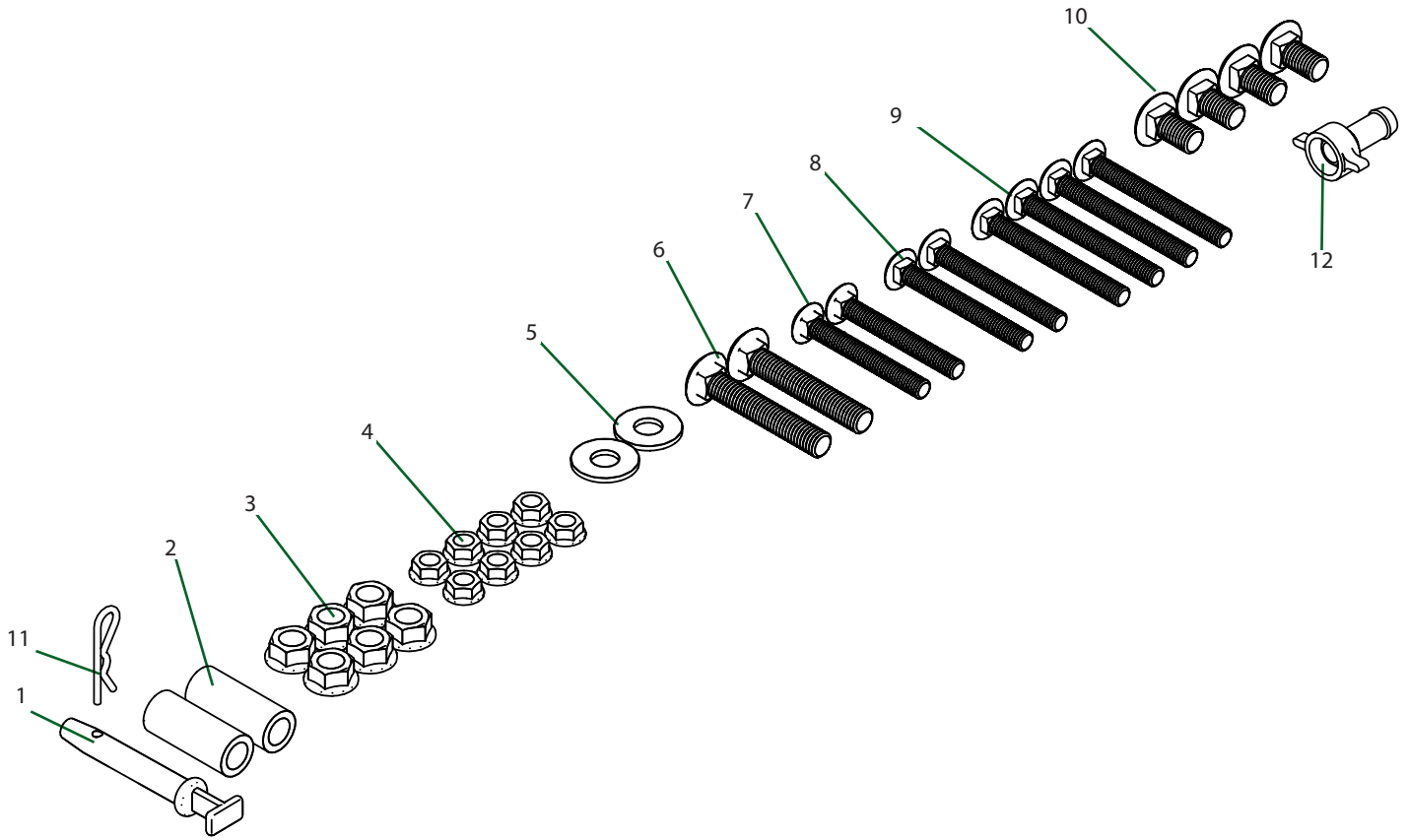
Box Contents (Axle, Wheels, Hitch, Motor, and Pump)



Item	Qty.	Part Number	Description
1	1	-----	Assembled Motor and Pump
2	2	-----	Assembled Wheels and Axles
3	1	T718	Hitch tube
4	2	T745	Trailer Arm

Assembly Instructions

Hardware Bag (Axle, Wheels, Hitch, Motor, and Pump)

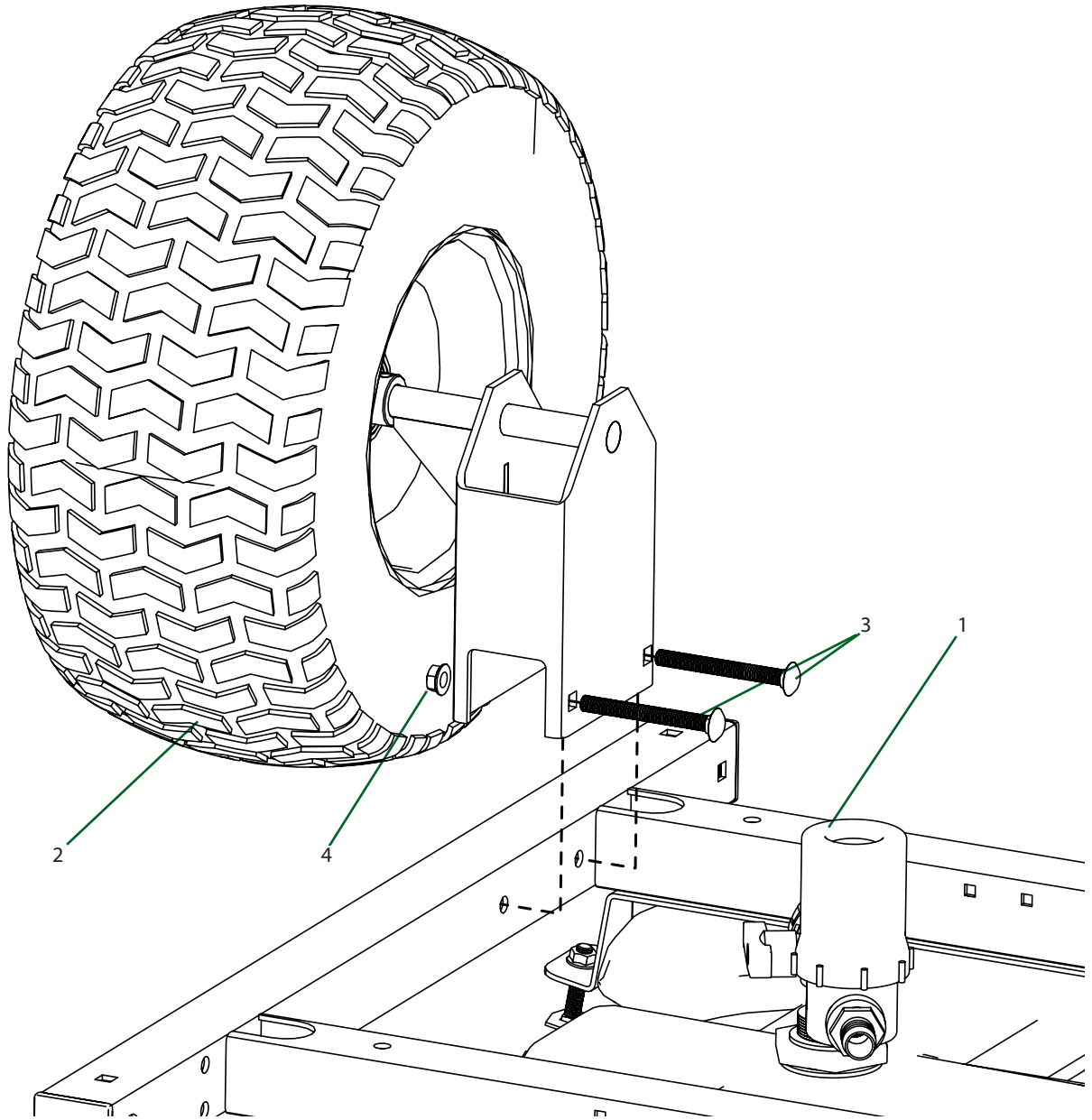


Item	Qty.	Part Number	Description
1	1	18812	Pin, Hitch T-Handle 1/2" x 2-1/4"
2	2	T716	Bushing, Bolt
3	6	FN12	Nut, Flange 1/2-13
4	8	FN38	Nut, Flange 3/8-16
5	2	FW12	Washer, Flat 1/2" USS
6	2	CB12*3G5	Bolt, Carriage 1/2-13 x 3" Gr 5
7	2	CB38*3G5	Bolt, Carriage 3/8-16 x 3" Gr 5
8	2	CB38*314G5	Bolt, Carriage 3/8-16 x 3-1/4" Gr 5
9	4	CB38*312G5	Bolt, Carriage 3/8-16 x 3-1/2" Gr 5
10	4	CB12*1G5	Bolt, Carriage 1/2-13 x 1" Gr 5
11	1	CP11516	Clip Pin .125" x 1-15/16" 7/16"E
12	1	9910110130	Adapter, 1/2" HB x 1/2" BSP Wing Nut Assy

Assembly Instructions

Step 1 (x2)

- Install the wheel and axles onto the base frame.

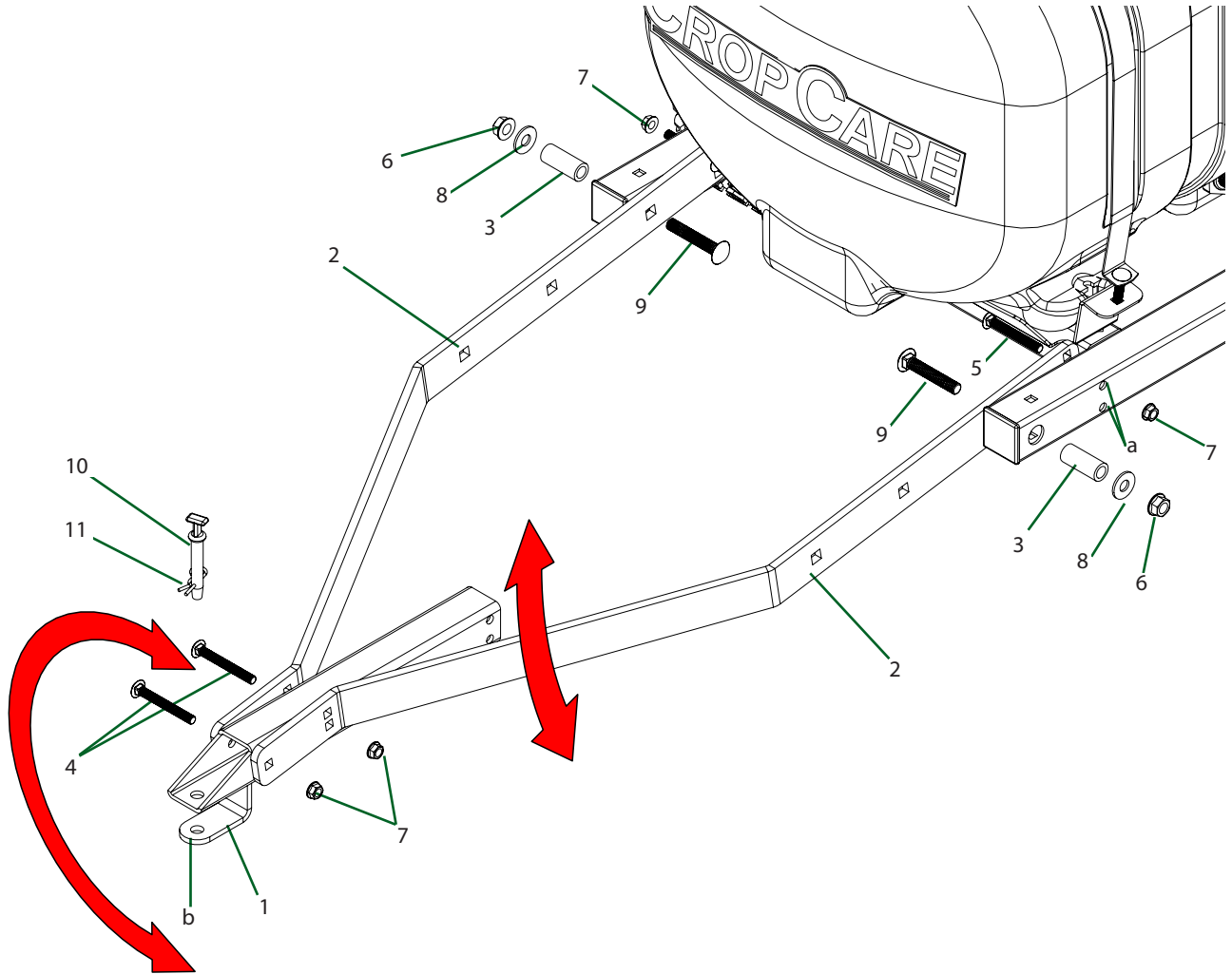


Item	Qty.	Part Number	Description
1	1	-----	Assembled Tank and Base
2	2	-----	Wheel and Axle Assembly
3	4	CB38*312G5	Bolt, Carriage 3/8-16 x 3-1/2" Gr 5
4	4	FN38	Nut, Flange 3/8-16

Assembly Instructions

Step 2

- Install the hitch onto the front of the trailer.
- NOTE: There are several mounting options to set the hitch height to match the draw bar height of the tow vehicle. Set the hitch height so that the tank is as close to level as possible.
- The hitch arms (Item 2) can be adjusted by which hole is used in the base frame (a).
- The hitch (Item 1) can be rotated to have the bent tab (b) on the top or the bottom.

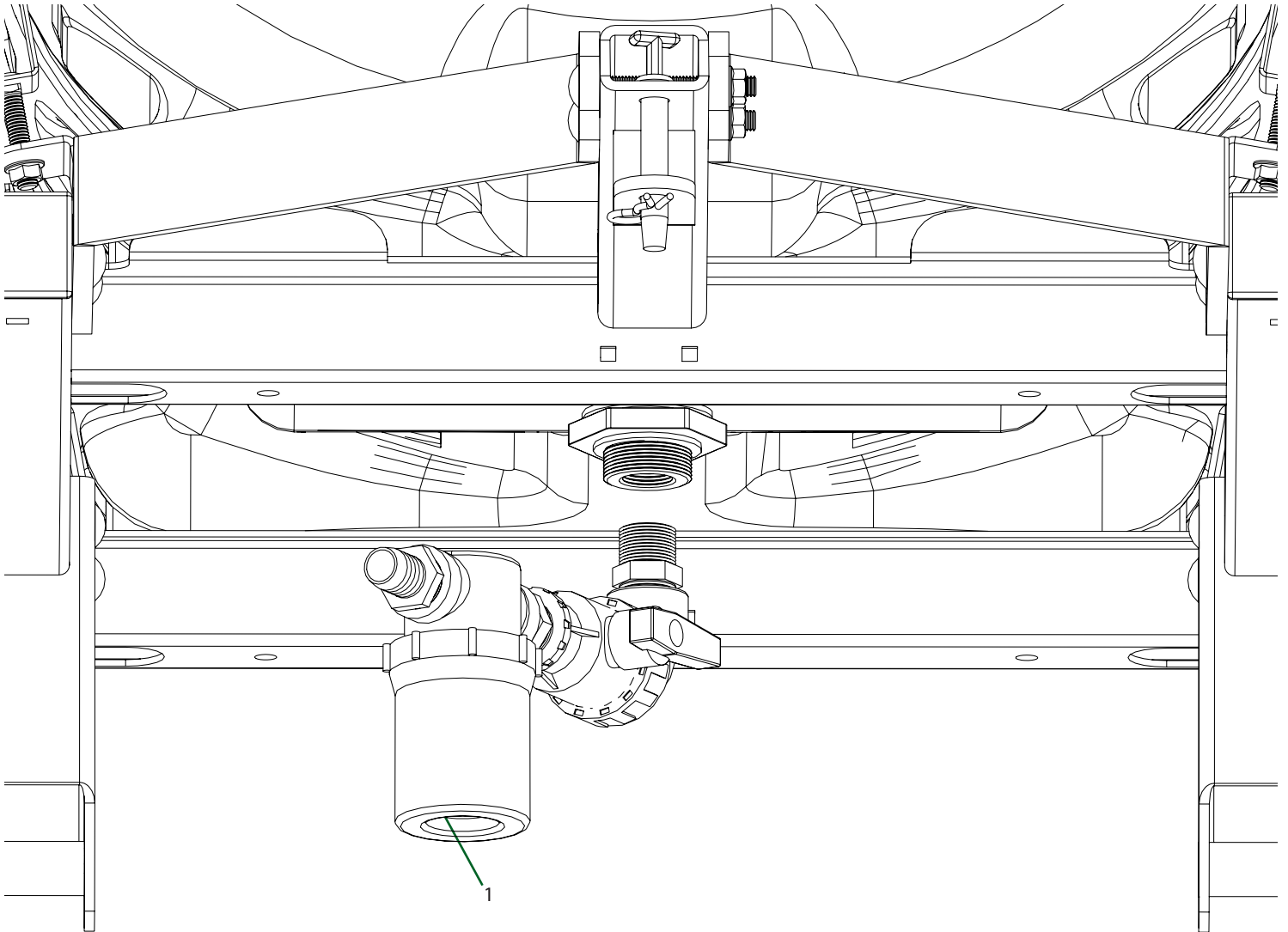


Item	Qty.	Part Number	Description
1	1	T718	Hitch tube
2	2	T745	Trailer Arm
3	2	T716	Bushing, Bolt
4	2	CB38*314G5	Bolt, Carriage 3/8-16 x 3-1/4" Gr 5
5	2	CB38*3G5	Bolt, Carriage 3/8-16 x 3" Gr 5
6	2	FN12	Nut, Flange 1/2-13
7	4	FN38	Nut, Flange 3/8-16
8	2	FW12	Washer, Flat 1/2" USS
9	2	CB12*3G5	Bolt, Carriage 1/2-13 x 3" Gr 5
10	1	18812	Pin, Hitch T-Handle 1/2" x 2-1/4"
11	1	CP11516	Clip Pin .125" x 1-15/16" 7/16"E

Assembly Instructions

Step 3

- Install the filter and valve assembly into the bulkhead fitting on the bottom of the tank. Use thread tape and sealant on threads.
- NOTE: Rotate the assembly slightly to the left side of the unit (facing from the hitch end of the trailer). This will allow the hose connecting the pump inlet to fit better.

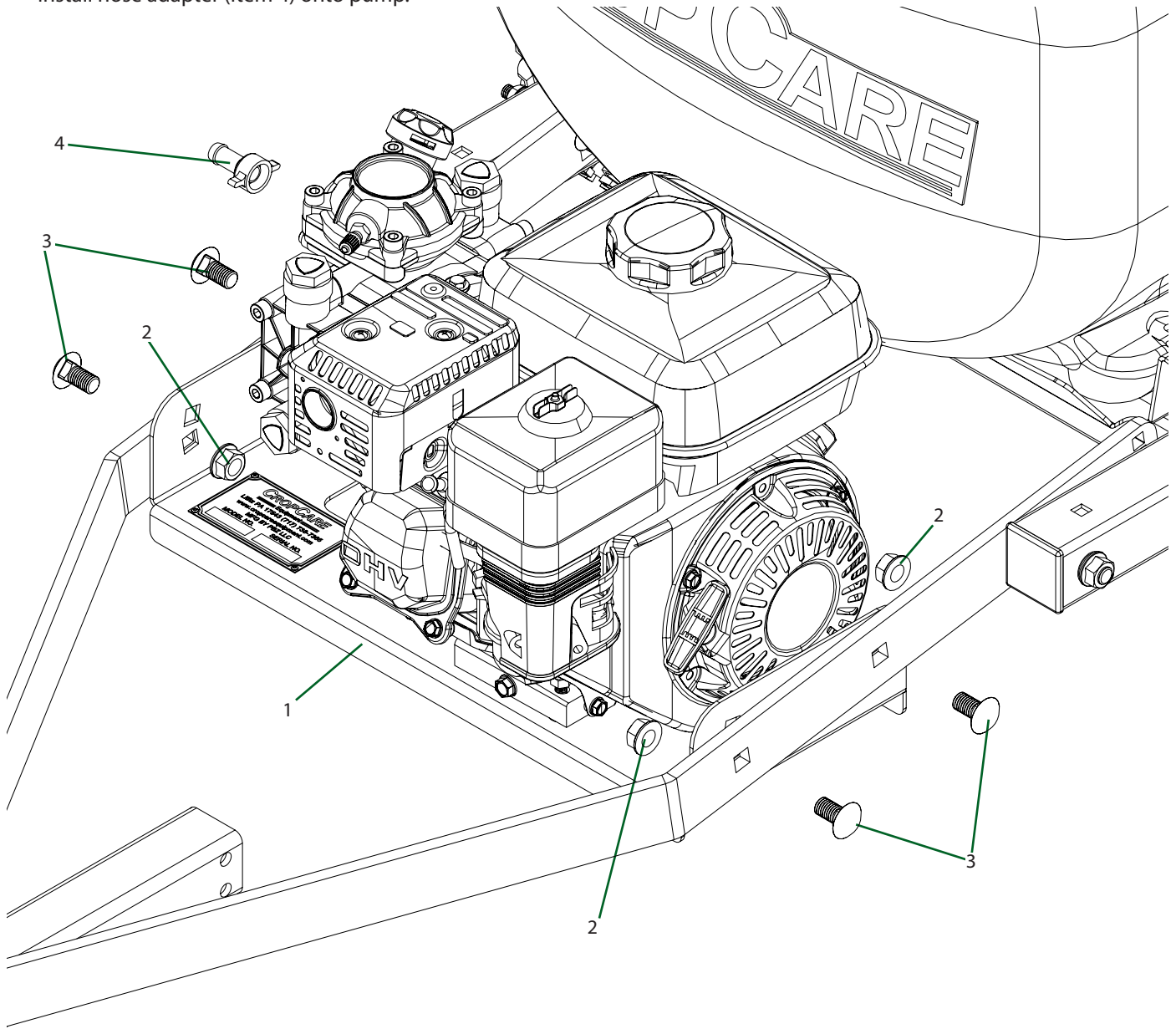


Item	Qty.	Part Number	Description
1	1	-----	Assembled Valve and Filter

Assembly Instructions

Step 4

- Install the motor and pump assembly.
- Install hose adapter (Item 4) onto pump.

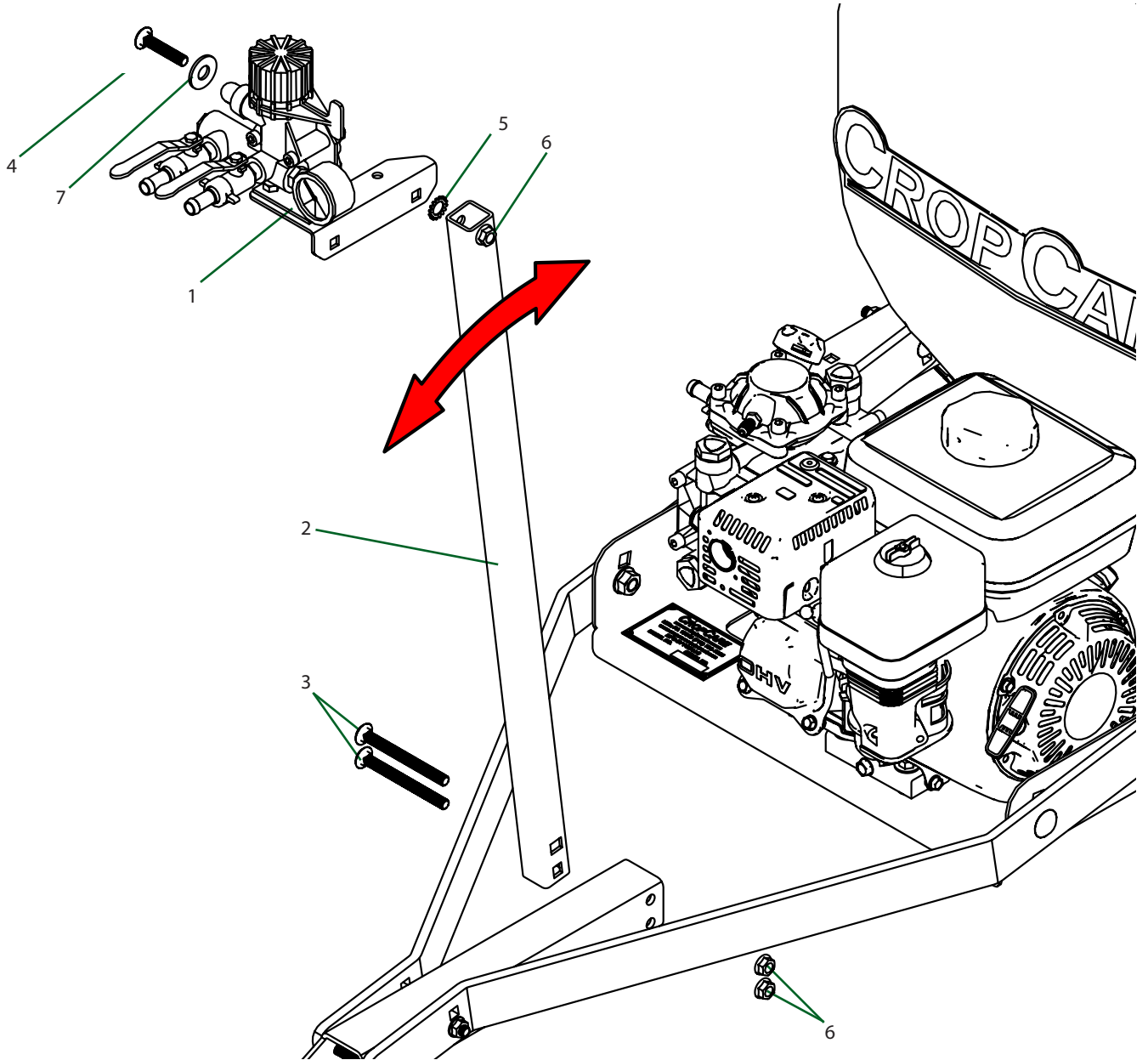


Item	Qty.	Part Number	Description
1	1	-----	Assembled Motor and Pump
2	4	FN12	Nut, Flange 1/2-13
3	4	CB12*1G5	Bolt, Carriage 1/2-13 x 1" Gr 5
4	1	9910110130	Adapter, 1/2" HB x 1/2" BSP Wing Nut Assy

Assembly Instructions

Step 5

- Install the control mounting post and controls.
- NOTE: Item 2 can be positioned slightly forward or straight to position the controls. Item 1 can be moved forward or back for farther adjustment, based on which hole is bolted through to the post. (Shown with controls positioned forward.)

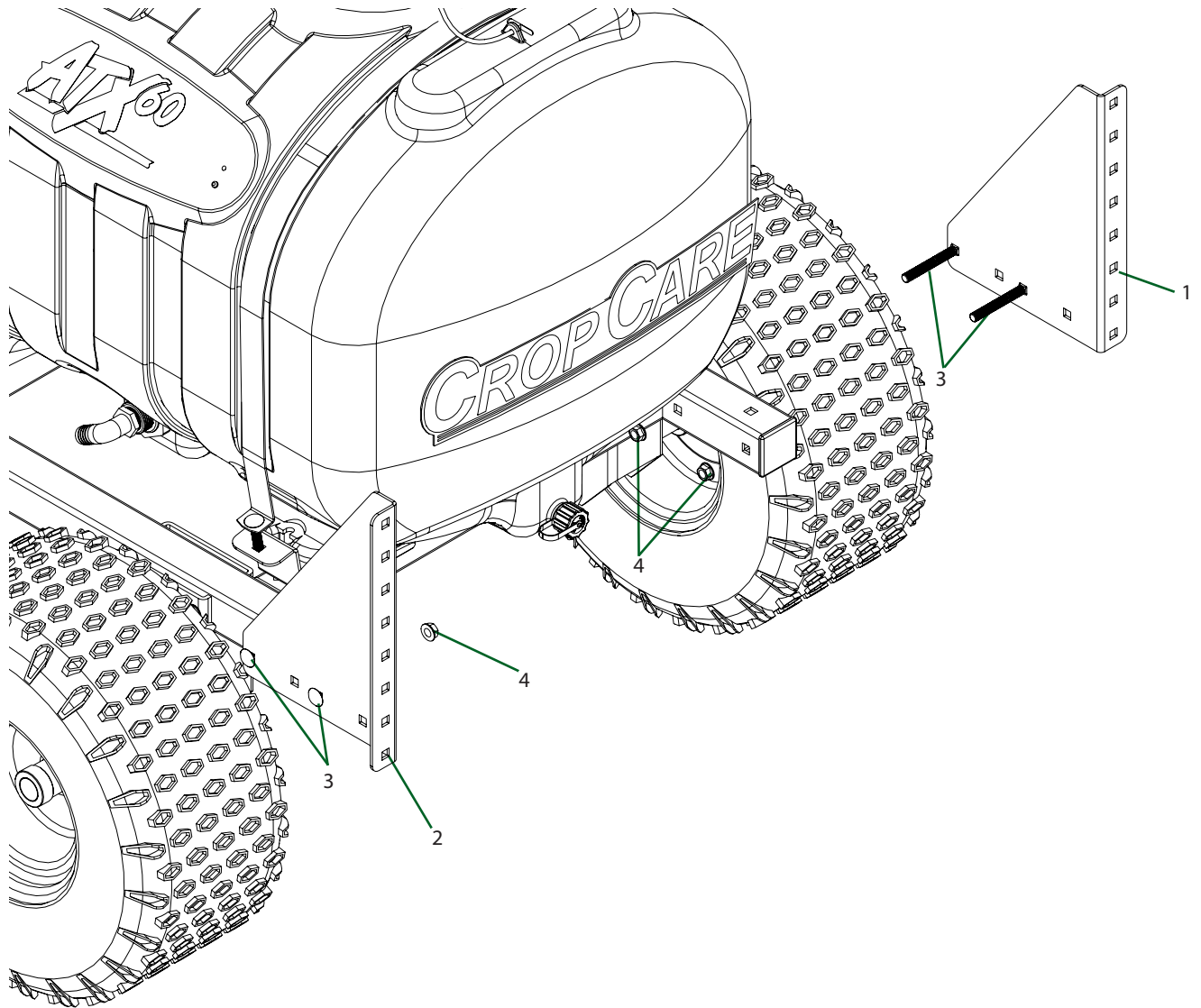


Item	Qty.	Part Number	Description
1	1	-----	Assembled Controls
2	1	T714	Control mounting post
3	2	CB38*4G5	Bolt, Carriage 3/8-16 x 4" Gr 5
4	1	CB38*134G5	Bolt, Carriage 3/8-16 x 1-3/4" Gr 5
5	1	EW38	Washer, Lock External-Tooth 3/8"
6	3	FN38	Nut, Flange 3/8-16
7	1	FW12	Washer, Flat 1/2" USS

Assembly Instructions

Step 6

- Install boom mounting brackets. Brackets can be bolted on in several different ways, or switched from side to side as needed to fit the boom.

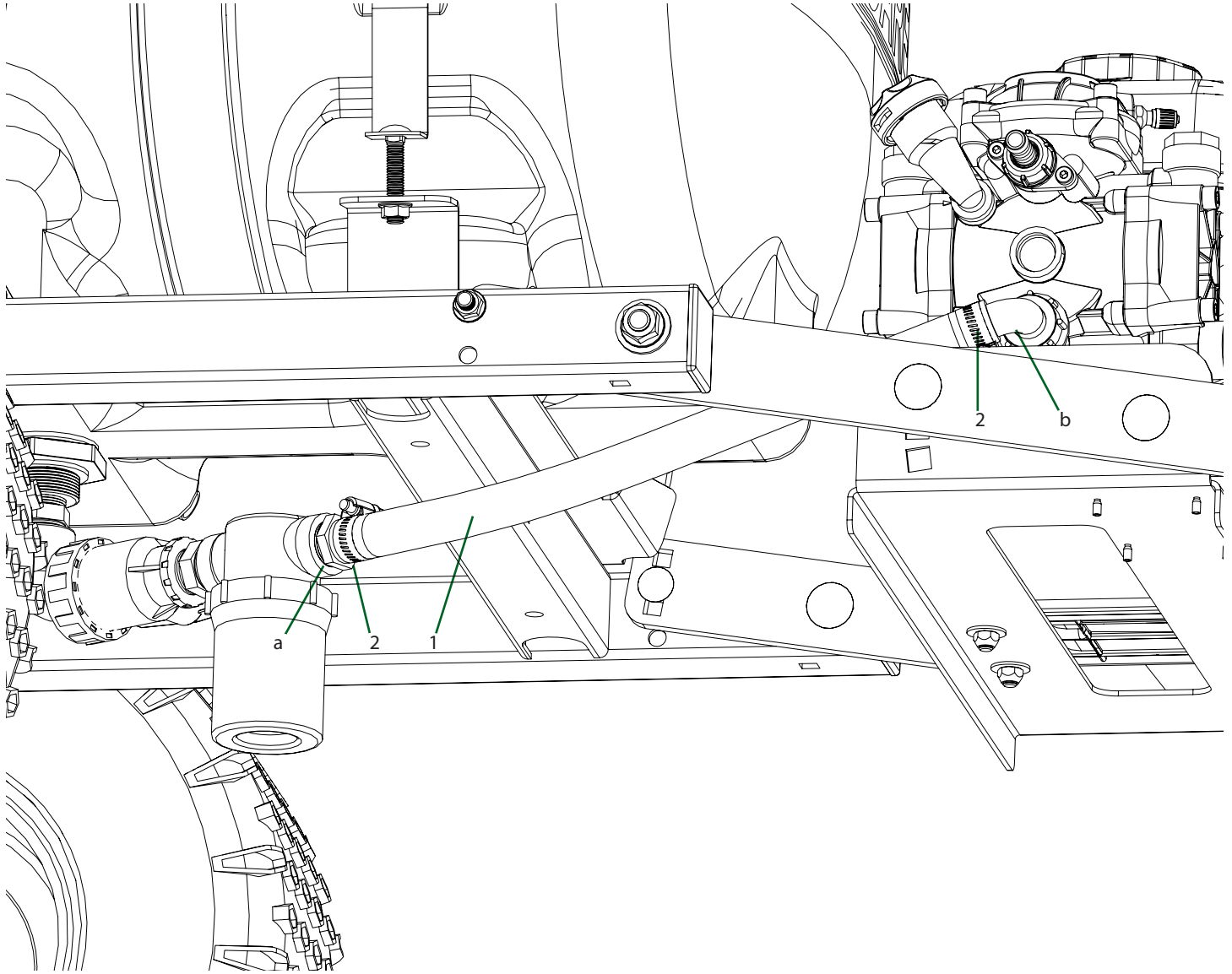


Item	Qty.	Part Number	Description
1	1	T702	Boom Mounting Angle, Side A
2	1	T703	Boom Mounting Angle, Side B
3	4	CB38*3G5	Bolt, Carriage 3/8-16 x 3" Gr 5
4	4	FN38	Nut, Flange 3/8-16

Assembly Instructions

Step 7

- Connect the suction hose to the hose barb fitting (a) on the filter to the hose barb (b) on the pump.

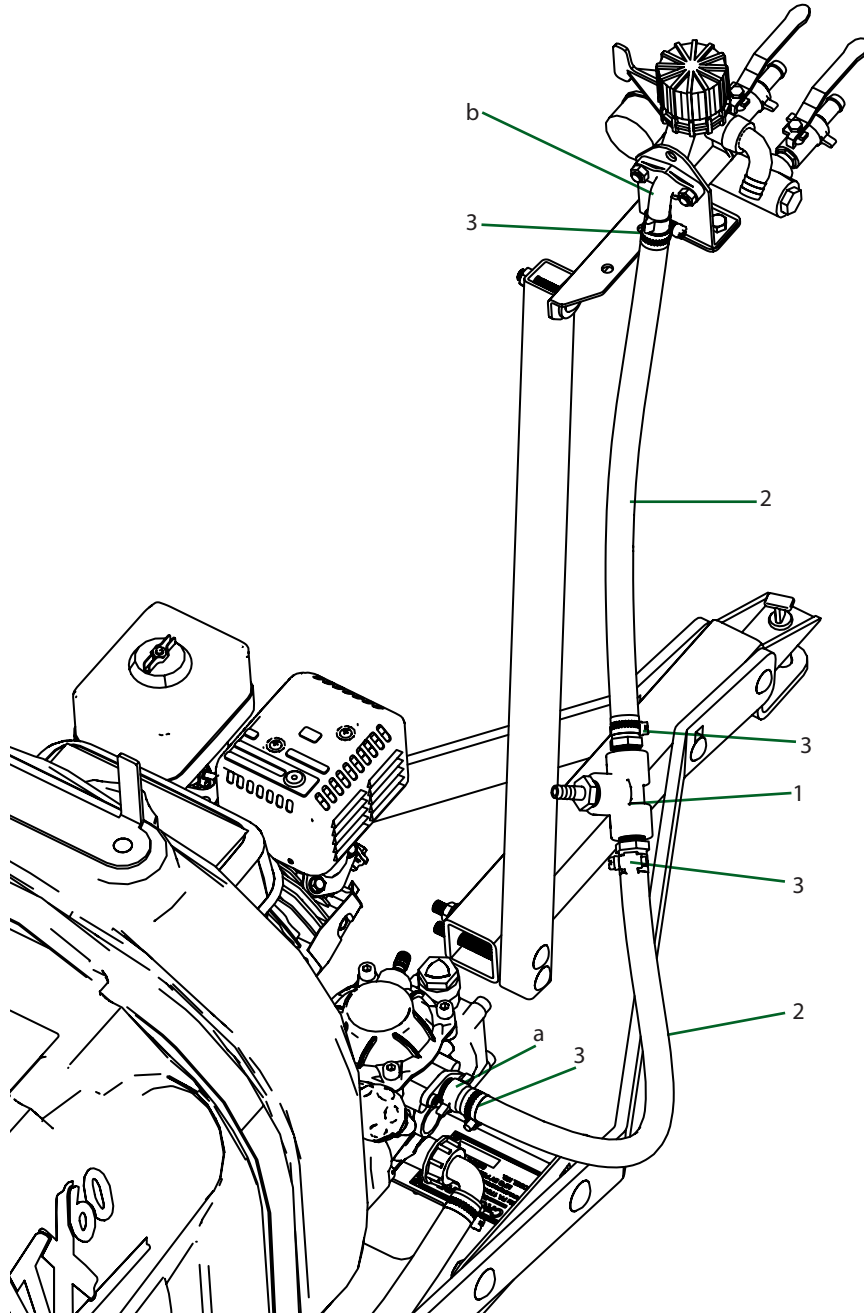


Item	Qty.	Part Number	Description
1	1.5 FT	3003	Hose, Suction 3/4" Clear PVC 100 PSI
2	2	6810052	Hose Clamp, 1/2" - 1-1/16" SS

Assembly Instructions

Step 8

- Install the hose from the hose barb (a) on the pump to the hose barb (b) on the control assembly.
- Cut the hose in between the pump and controls, and install the assembled tee fittings (Item 1) to be used to connect to the spray gun.

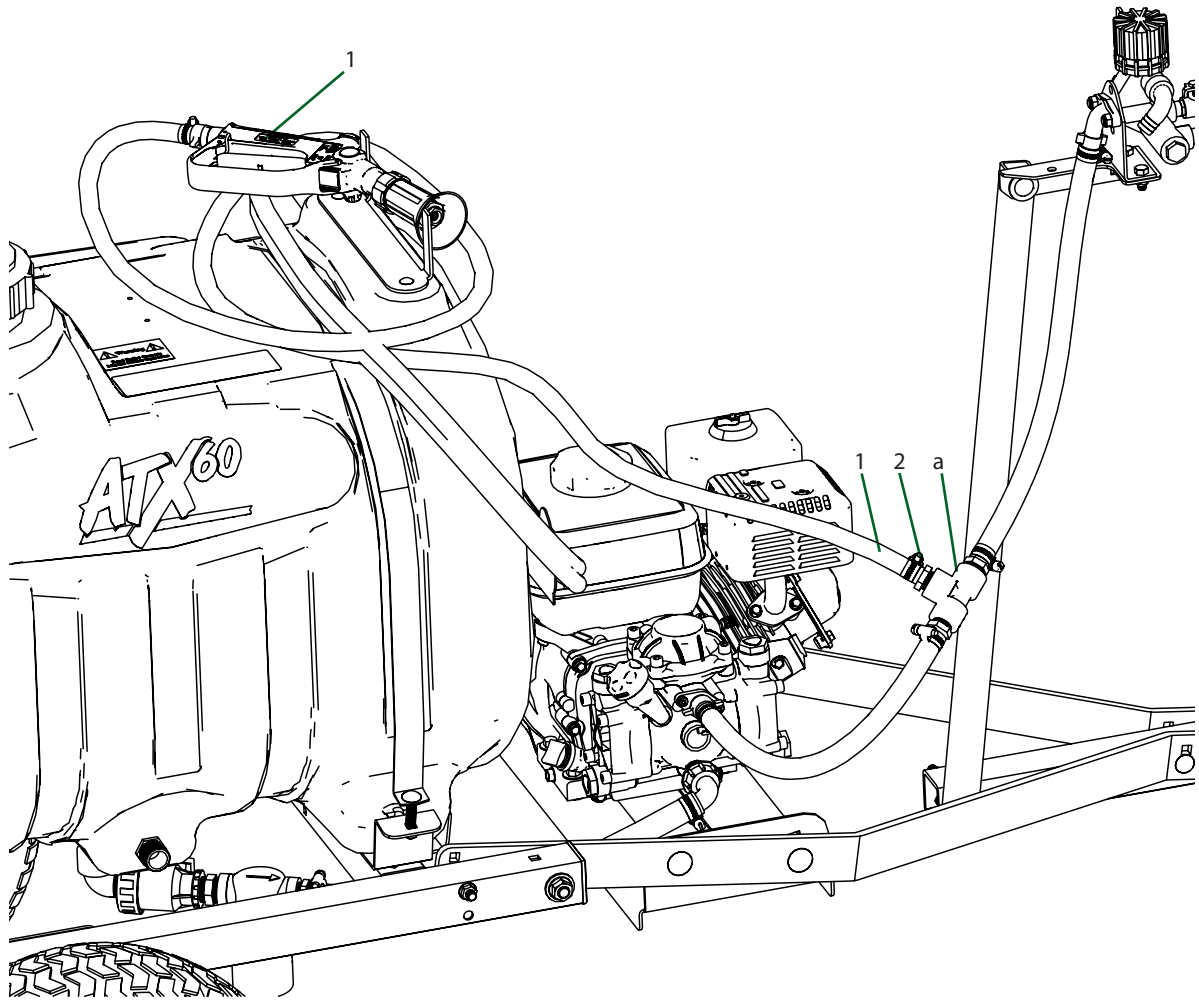


Item	Qty.	Part Number	Description
1	1	-----	Assembled Tee
2	3.5 FT	1008	Hose, EPDM Rubber 1/2"
3	4	6806052	Hose Clamp, 1/2" - 29/32" SS

Assembly Instructions

Step 9

- Install the spray gun assembly onto the tee fitting (a).

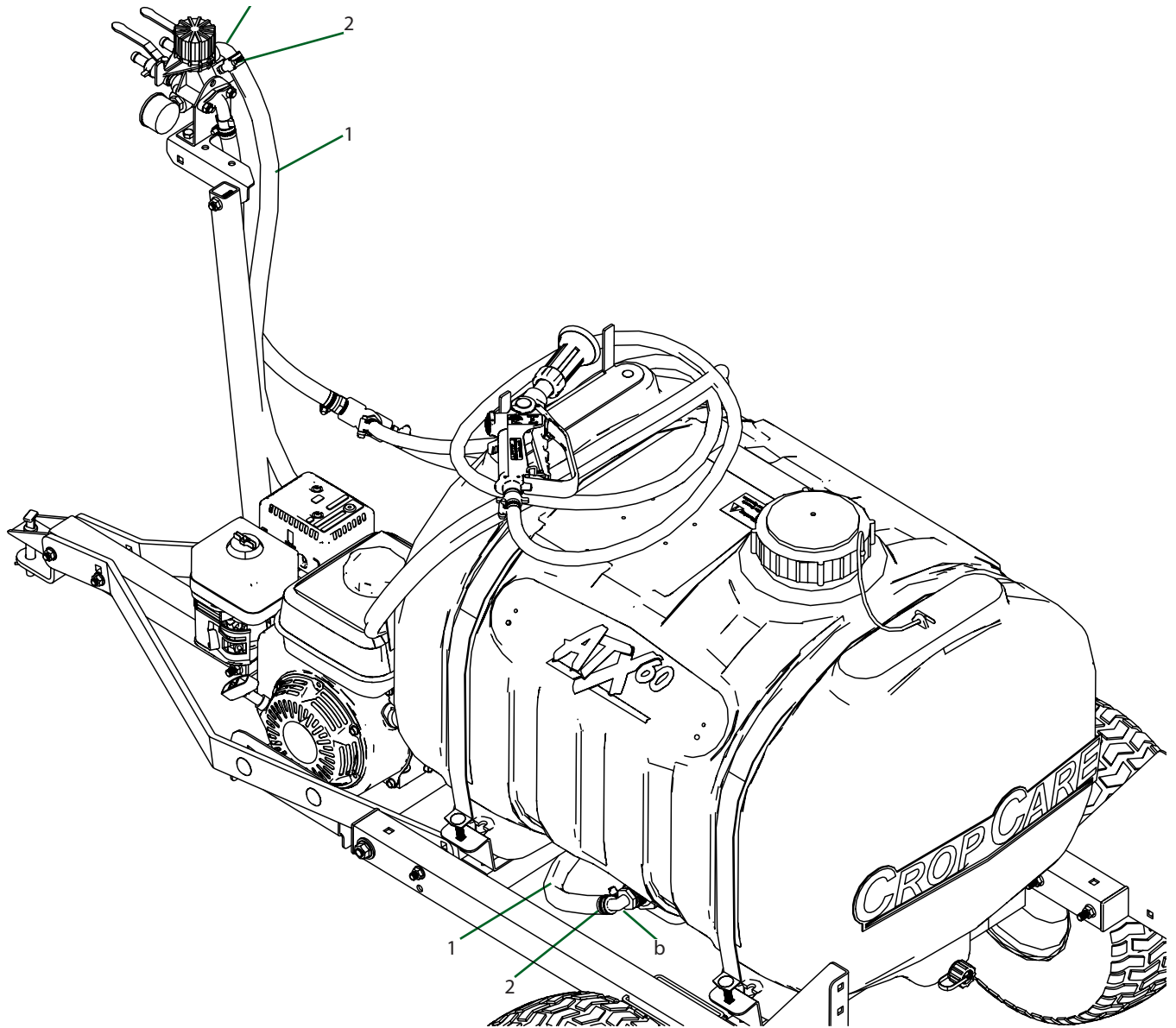


Item	Qty.	Part Number	Description
1	1	-----	Assembled Spray Gun
2	1	6806052	Hose Clamp, 1/2" - 29/32" SS

Assembly Instructions

Step 10

- Install the bypass hose (Item 1). Connect the hose to the hose barb on the controls (a), and rout hose underneath the tank to the bypass inlet elbow (b).

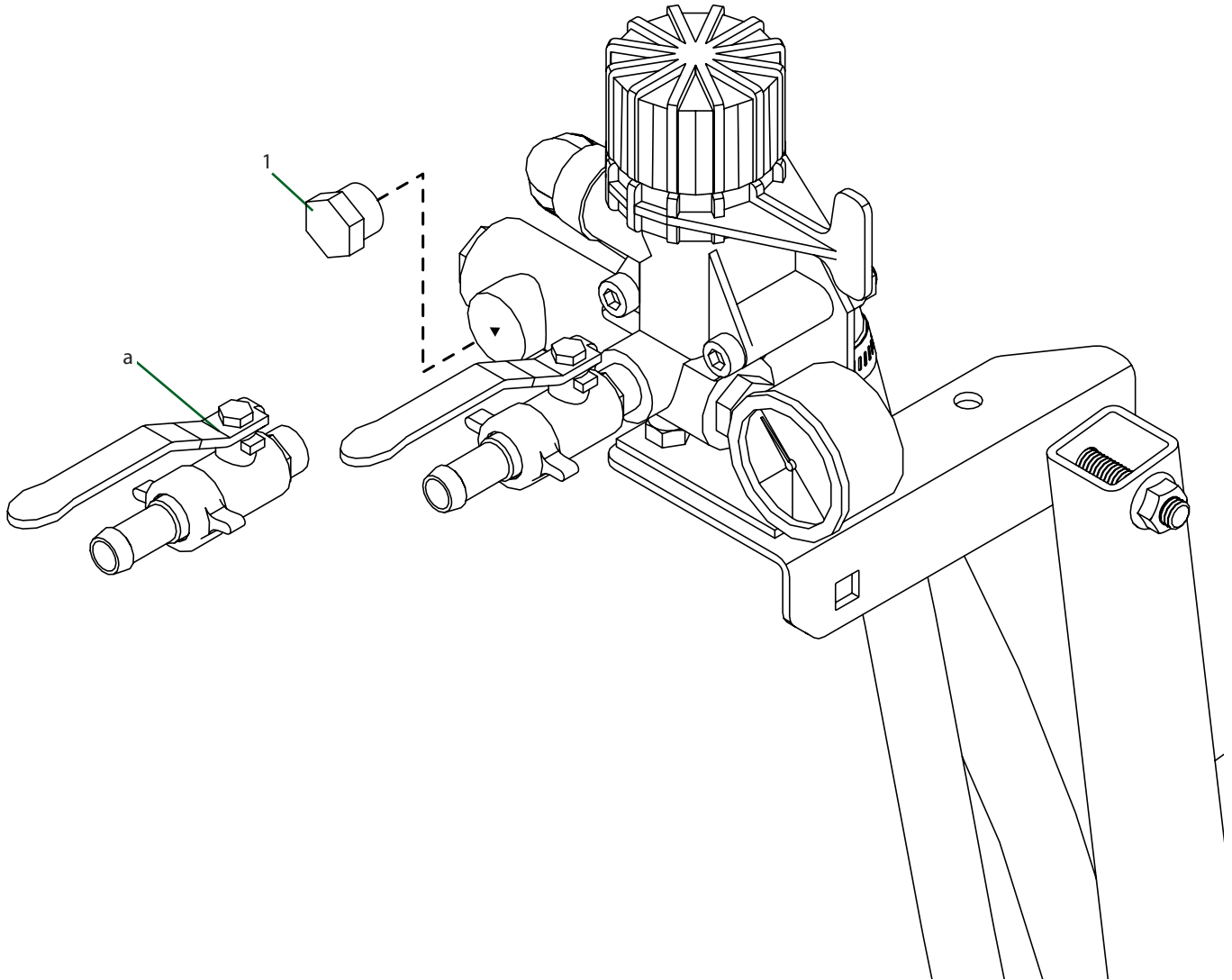


Item	Qty.	Part Number	Description
1	6.25FT	1010	Hose, EPDM Rubber 5/8"
2	2	6810052	Hose Clamp, 1/2" - 1-1/16" SS

Assembly Instructions

Step 11

- If the boom only has one section, remove the one valve (a) from the controls, and replace with threaded plug.
- NOTE: There is an o-ring at the valve fitting, make sure to re-use this o-ring for the plug.

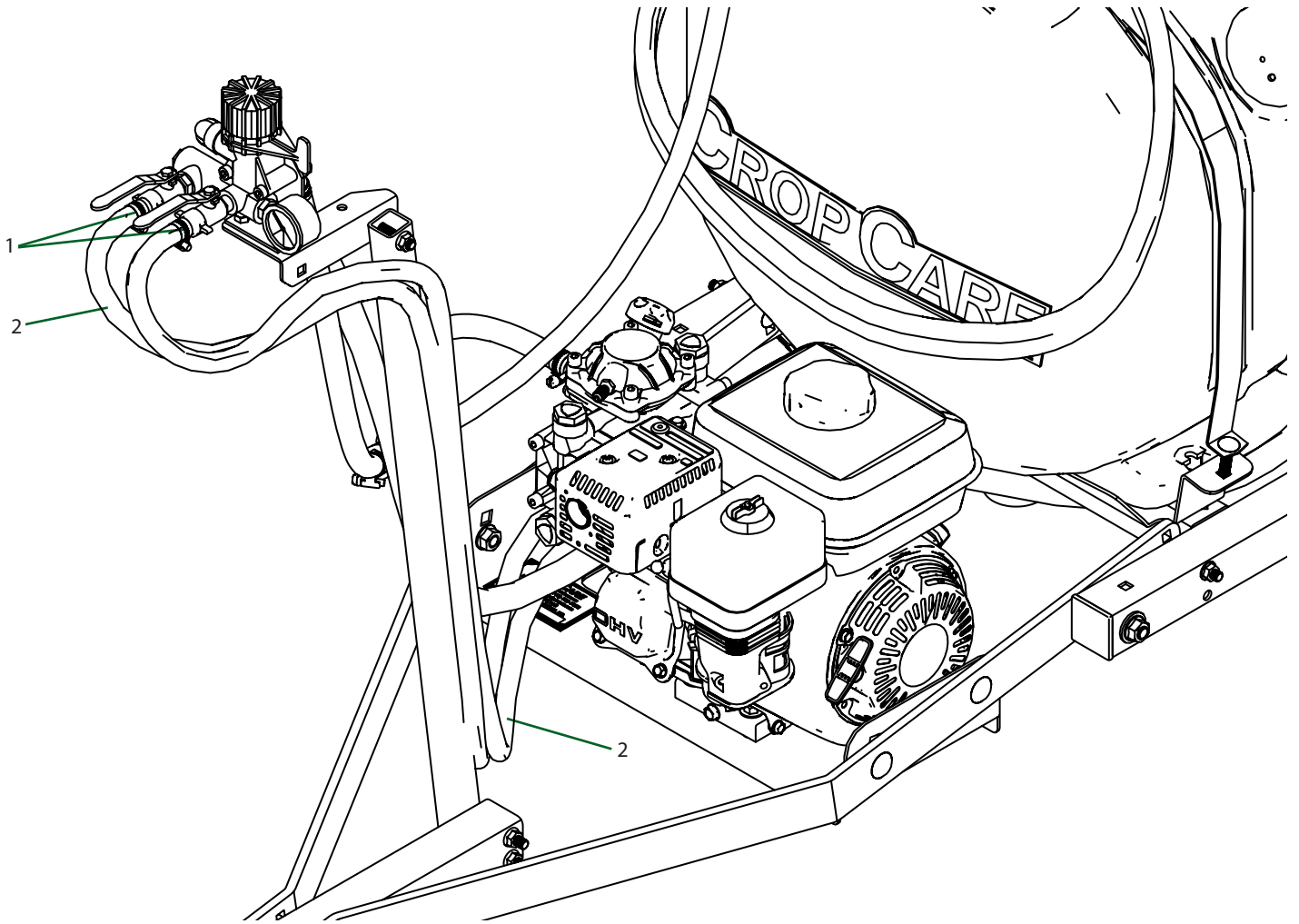


Item	Qty.	Part Number	Description
1	1	2841240	Plug

Assembly Instructions

Step 12

- Install the boom supply hoses onto valves, and route the hoses back under the frame. Connect to boom.



Item	Qty.	Part Number	Description
1	22 FT	1008	Hose, EPDM Rubber 1/2"
2	4	6806052	Hose Clamp, 1/2" - 29/32" SS

IMPORTANT: Before use, be sure to do the following:

- Read the owner's manual. Follow all safety and use instructions.
- Check the oil level on the pump (see pump owners manual for details). Add oil as needed.
- Check the air pressure of the pump diaphragm (see pump owners manual for details).
- Check the oil and fuel levels of the gas engine (see engine owner's manual for details).

Congratulations, your new CropCare® sprayer is assembled
and ready for years of use!

Contact us with questions or concerns at:
Info.cropcare@pbzinc.com

Or find additional support materials at:
CropCareEquipment.com